



ACPMS

The ASEAN Community Progress Monitoring System (ACPMS) is a project under the ASEAN-Australia Development Cooperation Program Phase II (AADCP II). It aims to track pertinent socio-economic progress and trends in ASEAN through the use of outcomes-level Key Performance Indicators (KPIs) for the ASEAN Economic Community (AEC) and the ASEAN Socio-Cultural Community (ASCC). These series of ACPMS infographics derived from the ACPMS Report 2017, comprises of four themes which are inclusive development, tariff liberalisation, connectivity and narrowing the development gap. The 2017 Report, the last of the three ACPMS report series, complemented the existing broader regional integration monitoring mechanisms for the ASEAN Community.

Connectivity

A major achievement in ASEAN is enhanced connectivity through improvements in transport and other infrastructure networks which have brought the peoples and businesses closer together. Tourism is a sector that has clearly benefited from better connectivity, while broadband access is key to thrive in a digital economy.

Tourist arrivals



Tourist arrivals refer to the number of international inbound tourists (overnight visitors) that travel to a country other than their usual country of residence for a period not exceeding 12 months and whose main purpose in visiting is other than an activity remunerated from within the country visited.

Fixed broadband subscriptions



Fixed broadband subscriptions refer to fixed subscriptions to high-speed access to the public Internet (a TCP/IP connection), at downstream speeds equal to, or greater than, 256 kbit/s. This includes cable modem, DSL, fiber-to-the-home/building, other fixed (wired)-broadband subscriptions, satellite broadband and terrestrial fixed wireless broadband. This total is measured irrespective of the method of payment. It excludes subscriptions that have access to data communications (including the Internet) via mobile-cellular networks. It should include fixed WiMAX and any other fixed wireless technologies. It includes both residential subscriptions and subscriptions for organisations.

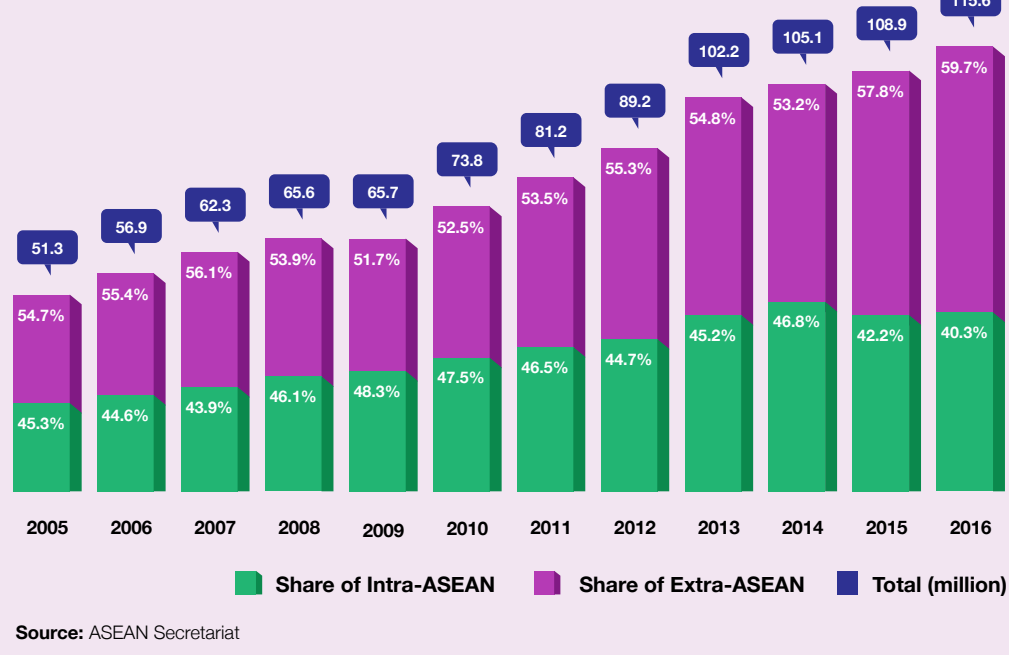
ASEAN COMMUNITY PROGRESS MONITORING SYSTEM 2017

CONNECTIVITY

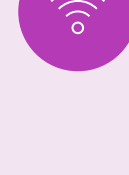


Visitor Arrivals in ASEAN (in million persons)

The total visitor arrivals from within and outside ASEAN more than doubled from 51.3 million persons in 2005 to 115.6 million persons in 2016. The share of Intra-ASEAN visitor arrivals in total arrivals slightly decreased from 45.3% to 40.3% over the same period.

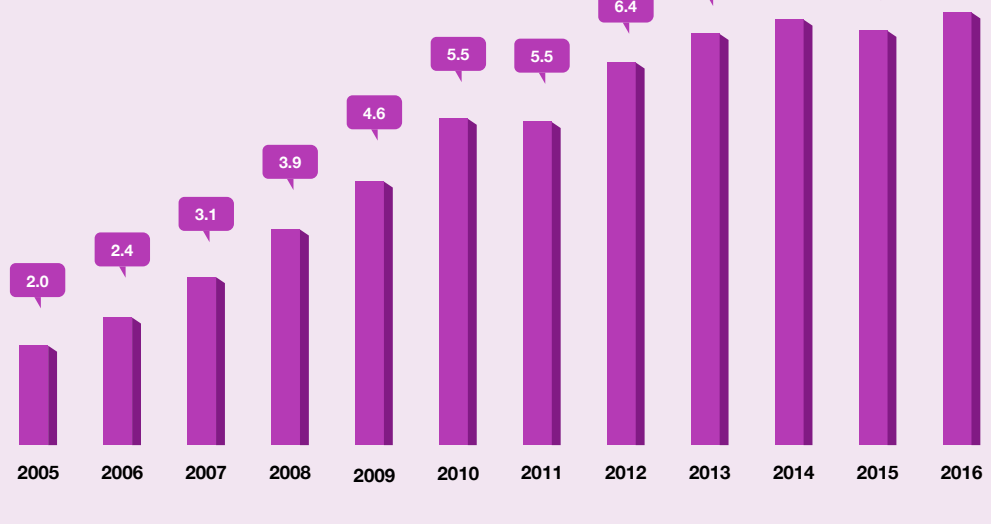


Source: ASEAN Secretariat



Fixed Broadband Subscriptions in ASEAN (per 100 people)

Fixed broadband subscriptions in ASEAN have consistently increased between 2005 and 2016, reaching an average of 7.2 per 100 people in 2016, more than triple the average in 2005 which was 2.0 per 100 people.

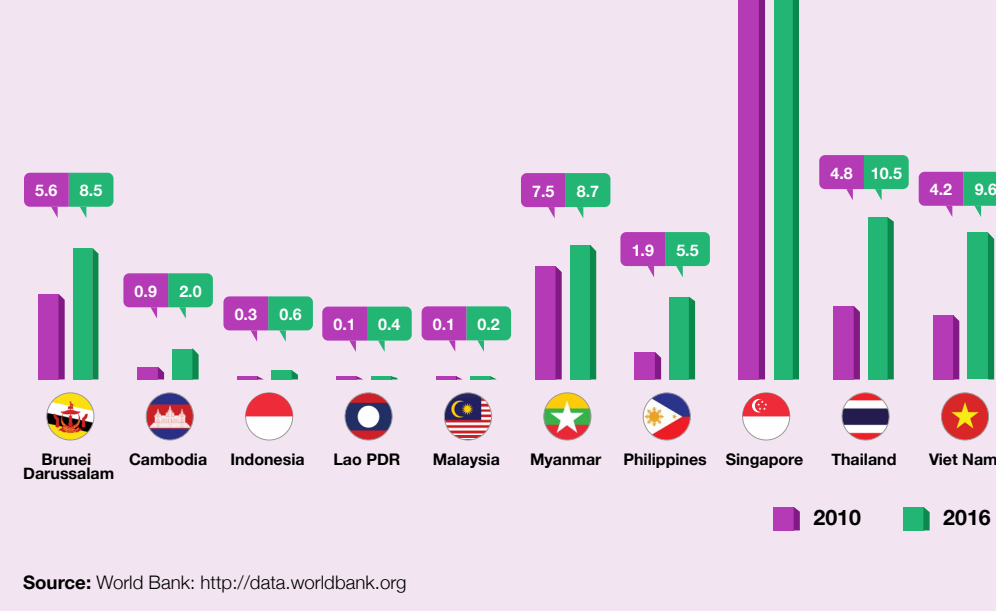


Source: World Bank: <http://data.worldbank.org>



Fixed Broadband Subscriptions by Member States (per 100 people)

Fixed broadband subscriptions have increased significantly across ASEAN Member States from 2010 to 2016.



Source: World Bank: <http://data.worldbank.org>



This leaflet is supported by the Government of Australia through the ASEAN-Australia Development Cooperation Program Phase II (AADCP II).

The Association of Southeast Asian Nations (ASEAN) was established on 8 August 1967. The Member States of the Association are Brunei Darussalam, Cambodia, Indonesia, Lao PDR, Malaysia, Myanmar, Philippines, Singapore, Thailand and Viet Nam.

The ASEAN Secretariat is based in Jakarta, Indonesia.

For inquiries, contact:
The ASEAN Secretariat
Community Relations Division (CRD)
70A Jalan Sisingamangaraja
Jakarta 12110
Indonesia
Phone: (62 21) 724-3372, 726-2991
Fax: (62 21) 739-8234, 724-3504
E-mail: public@asean.org

Catalogue-in-Publication Data

ASEAN Community Progress Monitoring System 2017
Jakarta: ASEAN Secretariat, October 2018

341.2473
1. ASEAN - Indicators - Statistics
2. Economic - Socio-Cultural - Connectivity

ASEAN: A Community of Opportunities

The text of this publication may be freely quoted or reprinted, provided proper acknowledgement is given and a copy containing the reprinted material is sent to the Community Relations Division (CRD) of the ASEAN Secretariat, Jakarta

General information on ASEAN appears online at the ASEAN Website: www.asean.org

Copyright Association of Southeast Asian Nations (ASEAN) 2018. All rights reserved.